

MPEG-4 / JPEG



Network Colour Dome Camera with MPEG-4 & JPEG Dual Streaming, PoE (Power over Ethernet), 3.6x Variable-Focal Lens

The new Panasonic WV-NF284 is the newest addition to the Panasonic **i-Pro** Series lineup, a compact, stylish network colour dome camera with MPEG-4 & JPEG dual streaming.

Select JPEG or MPEG-4 only, and this camera can transmit VGA (640 x 480) images at up to 30 ips. Or using both combines seamless video monitoring of MPEG-4 with high resolution JPEG recording. The 1/4-type progressive scan CCD captures moving subjects with minimal blurring, and multicast (MPEG-4 only) is also supported.

Additional features include the 3.6x variable-focal lens (2.8 - 10mm) that operates in light as low as 1.5 lux. Power over Ethernet (PoE) IEEE802.3af supplies power and transmits images over the same LAN cable. A high-sensitivity microphone is built-in.

When the camera is connected to an optional **i-Pro** Series Network Disk Recorder, images backed up on the optional SD memory card (during network failure) will be automatically transmitted to the recorder when the network is restored. Additional features include Video Motion Detector which allows users to program a system to record images automatically.

Reliable performance and easy set-up make the WV-NF284 the ideal network camera for school, transit, warehouse, mall and town security.

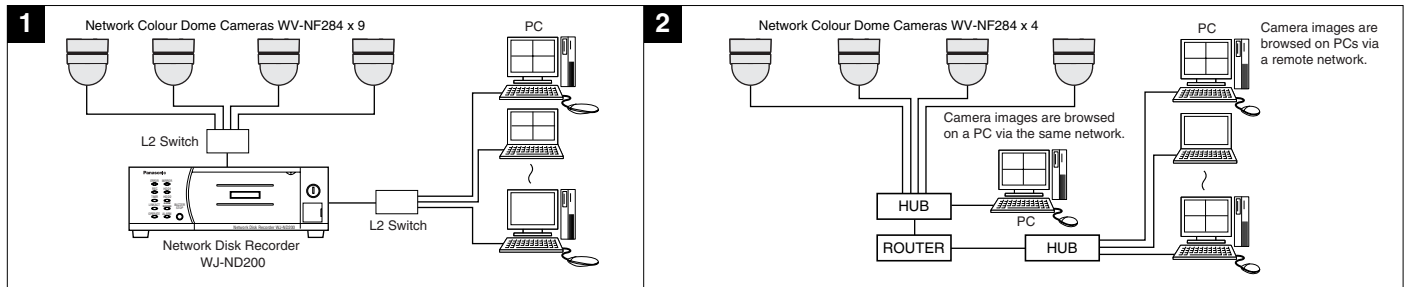
KEY FEATURES

- Built-in MPEG-4 and JPEG digital signal output at VGA image size with up to 30 ips.
- MPEG-4/JPEG dual stream output for simultaneous live monitoring and high resolution recording. (See the Frame Rate Chart for details.)
- 3.6x variable-focal lens (2.8 - 10mm).
- Power over Ethernet (PoE) IEEE 802.3af.
- Progressive scan type CCD image sensor.
- Supported Protocol: TCP/IP, UDP/IP, HTTP, RTP, FTP, SMTP, DHCP, DNS, DDNS, NTP and SNMP.
- Image refresh rate: 0.1 ips - 30 ips.
- Bandwidth control: 64 / 128 / 256 / 512 / 1,024 / 2,048 / 4,096 kbps and unlimited.
- Built-in network interface (10Base-T / 100Base-TX) for remote monitoring by PC.
- Sensitivity of 1.5 lux at F1.4 with clear dome cover.
- Built-in SD Memory card slot for alarm recording and backup upon network failure.
- Multi screen display (4 screens x 2 groups).
- Built-in Alarm function for external security devices.
- Built-in Video Motion Detector.
- Built-in electronic zoom function (1x, 1.5x, 2x, 2.5x and 3x).
- Automatic electronic sensitivity enhancement.
- Built-in microphone (G.726).
- The 3-dimensional hinge (Pan, Tilt and Azimuth) makes adjustments easy.

OPTIONAL ACCESSORIES



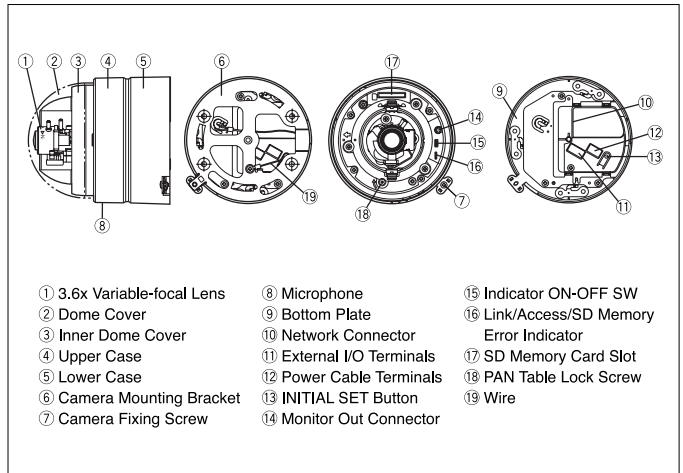
SYSTEM EXAMPLES



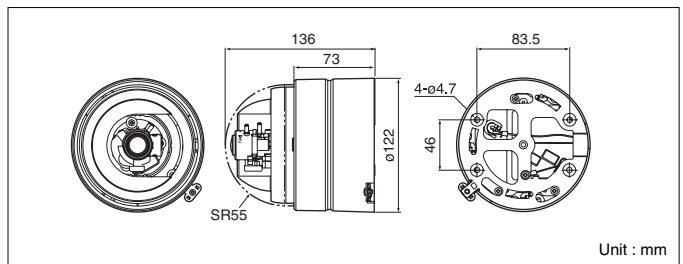
SPECIFICATIONS PAL

Camera	Image Sensor	1/4-type progressive scan CCD	
	Effective Pixels	659 (H) x 494 (V)	
	Scan Mode	Progressive scan	
	Scanning Area	3.59 (H) x 2.70 (V) mm	
	Minimum Illumination	1.5 lux with clear dome cover 0.19 lux with Sensitivity Up 8x	
	AGC	Always ON	
	Light Control	ALC/ELC Auto select	
	BLC	ON/OFF	
	Sensitivity UP	OFF, AUTO (2x, 4x, 8x, 16x)	
	White Balance	AUTO/HOLD	
	Electronic Zoom	1x, 1.5x, 2x, 2.5x, 3x	
	Camera Title	20 alphanumeric characters (Only a browser)	
	Video Motion Detector	On/Off Selectable, 4 areas, Sensitivity: High/Middle/Low	
Back Focus Adjustment	Manual		
Lens	Type	3.6x variable focal lens	
	Focal Length	2.8 - 10 mm	
	Angular Field of View	H: 20.8° (TELE) ~ 73.5° (WIDE) V: 15.6° (TELE) ~ 54.4° (WIDE)	
	Maximum Aperture Ratio	1:1.3 (WIDE) ~ 1:3.1 (TELE)	
	Min. Object Distance	1.2 m	
	Aperture Range	F1.3 ~ F176, Close	
	Network	Network IF	10Base-T / 100Base-TX, RJ45 connector
Image Resolution		JPEG: VGA (640 x 480), QVGA (320 x 240) max. 30 ips MPEG-4: VGA (640 x 480), QVGA (320 x 240) max. 30 ips	
Image Compression		MPEG-4: Image quality: LOW/NORMAL/FINE Transmission type: UNICAST/MULTICAST JPEG: Image quality: 10 steps Transmission type: PULL/PUSH	
Image Refresh Rate		0.1 ips ~ 30 ips (Frame rate of JPEG will be limited when transmitting JPEG and MPEG-4 simultaneously)	
Audio Compression		G.726 (ADPCM) 32 kbps/16 kbps	
Bandwidth Control		64 / 128 / 256 / 512 / 1,024 / 2,048 / 4,096 kbps and unlimited	
Supported Protocol		TCP/IP, UDP/IP, HTTP, FTP, SMTP, DHCP, DNS, DDNS, NTP, SNMP, RTP	
Supported OS		Windows 2000 Professional SP4, Windows XP Home/Professional SP2	
Supported Browser		Internet Explorer 6.0 SP2 (Windows XP Home/Professional SP2) Internet Explorer 6.0 SP1 (Only Windows 2000 Professional SP4)	
FTP Client		Alarm image transfer, Periodic image transfer	
Multi Screen		4 screens x 2 groups	
SD Memory Card (Option)		Alarm REC/Backup upon network failure. Compatible SD card: Panasonic 64MB, 128MB, 256MB, 512MB, 1GB, 2GB model. SDHC standard card not supported.	
Alarm Email		Yes	
Time Date Display		Time: 12H/24H, Date: 5 formats on the browser	
Security Measures		User/Host authentication, User level: 3 levels	
Input/Output		Monitor Output	1.0 V [p-p] / 75 Ω / PAL composite signal / ø3.5 mm mini jack
		External I/O Terminals	Alarm input x 1/Alarm output x 1, AUX output x1
	Microphone	Internal Microphone	
General	Power Source	24 V AC 50 Hz, 12 V DC, PoE (IEEE802.3af compliant)	
	Power Consumption	24 V AC: approx. 4.0 W, 12 V DC: approx. 350 mA, PoE: approx. 4.0 W (Class 0 device)	
	Ambient Operating Temperature	-10 °C ~ +50 °C	
	Ambient Operating Humidity	90 % or less (no condensation)	
	Dimensions	ø122 mm (D) x 136 mm (H)	
	Weight	approx. 640 g	

MAJOR OPERATING CONTROLS & TERMINALS



APPEARANCE



Frame Rate Chart

Image Resolution	Mode	Image Settings									
		0 Super Fine	1 Fine	2	3	4	5 Normal	6	7	8	9 Low
VGA (640 x 480)	Image Size (KB)	128	96	80	64	56	48	40	32	28	24
	Frame Rate (ips)	10	14	17	21	24	30	30	30	30	30
	Bit Rate (Mbps)	10.2	10.8	10.9	10.8	10.8	11.5	9.6	7.7	6.7	5.8
QVGA (320 x 240)	Image Size (KB)	44	40	36	32	28	24	20	16	14	12
	Frame Rate (ips)	26	28	30	30	30	30	30	30	30	30
	Bit Rate (Mbps)	9.2	9.0	8.6	7.7	6.7	5.8	4.8	3.8	3.4	2.9

Image Resolution	Mode	MPEG-4 Bit Rate Settings								
		4,096 kbps	3,072 kbps	2,048 kbps	1,536 kbps	1,024 kbps	512 kbps	256 kbps	128 kbps	64 kbps
VGA (640 x 480)	Low	30	30	30	25	22	10	5	2	1
	Normal	30	30	30	22	14	8	3	1	0.4
	Fine	27	22	19	13	9	4	1.5	0.5	0.2
QVGA (320 x 240)	Low	30	30	30	30	30	28	24	10	4
	Normal	30	30	30	29	28	24	12	4	1.5
	Fine	30	28	28	28	27	12	5	2	0.5

(ips)

(above all figures are approximate, actual figures may differ depending on the network, PC performance and complexity of the object.)

Trademarks and registered trademarks – Microsoft, and Windows are registered trademarks of Microsoft Corporation in the U.S. and other countries. – SD logo is a trademark.

Important – Safety Precaution: carefully read the operating instructions and installation manual before using this product.

– Panasonic can not be responsible for network performance and/or other manufacturer products that reside on the network.

• All TV pictures/menu are simulated. • Weights and dimensions are approximate. • Specifications are subject to change without notice. • These products may be subject to export control regulations.

DISTRIBUTED BY:

INFORMATION & IMAGE MANAGEMENT SYSTEMS, S.A.

Valencia, 279, 7ª planta
08009 Barcelona (España)
<http://www.ims.es>



Tel. (34) 93 272 33 00
Fax (34) 93 487 39 00
e-mail: info@ims.es

Panasonic

Panasonic is the brandname of Matsushita Electric.
Printed in Japan
WV-JKNF284T(2N-778)