

Password Policy Enhancement for Network eManager® Version 5.20B05

The Toshiba Strata CIX administration tool, Network eManager now has a new password policy feature to enhance security. Previous versions of Network eManager did not support any kind of password policy or rules for either the built-in Administrator account or any newly created user profiles. This latest version of Network eManager adds the following enhancement to password security.

- Password Policy
- Password complexity
- Force password change
- Minimum password length
- Days after password expires
- Days to remind password will expire

Password Policy

Using the password policy setting, the Administrator can either disable or enable the password security scheme for Network eManager. By default, the Password Policy is set for disable. In disable mode, Network eManager functions as normal without any password security in place. The password never expires and there is no limitation on the length of the password. If this function is enabled, then all security policy criteria is enabled.

Password Complexity

Password complexity allows for more granular control of the password security features. If password complexity is in place, then the following is true:

- Password cannot match the user login name
- Password length must match the password length criteria
- Lower and upper case letters will count
- Minimum password length
- Password history

Force Password Change

The force password change criteria allows the network administrator to force the Network eManager users to change their password the next time the users attempt to log into Network eManager.

Minimum Password Length

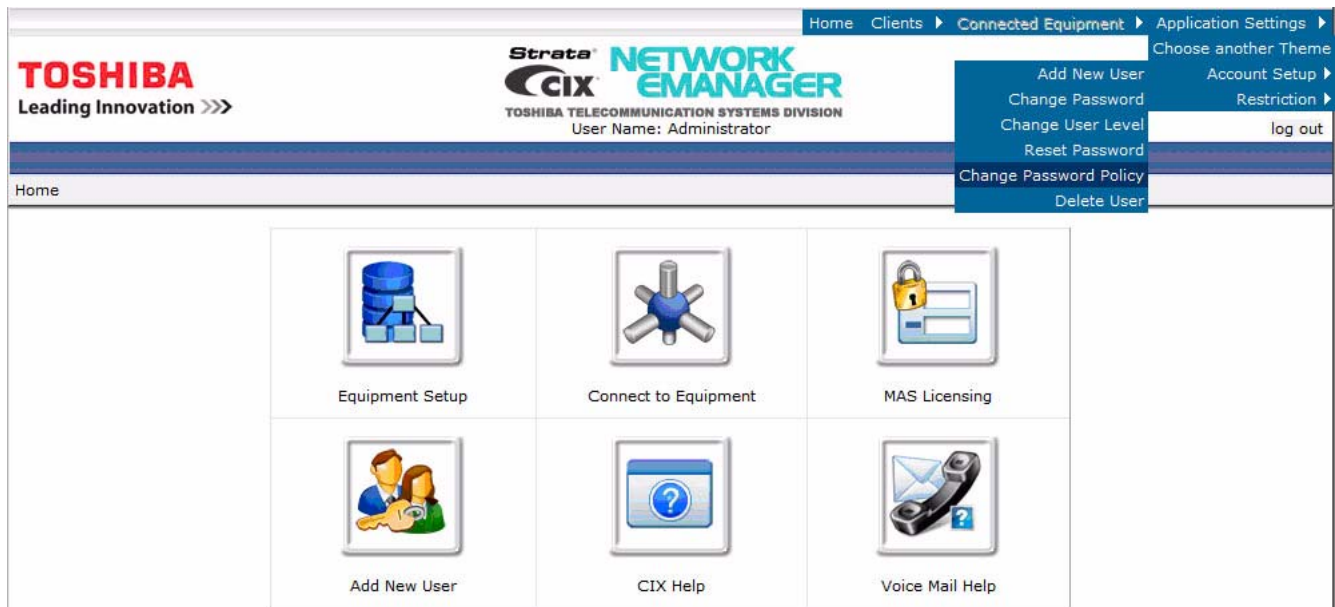
This value determines the least number of characters that a user account can specify for a password. The minimum value is one character and the maximum value is 14 characters. The default value is six characters.

Password History

This value determines the number of unique new passwords that have to be associated with a user account before an old password can be reused. This value can be configured. The minimum value is 0 with a maximum of 7. For example, if the Administrator chooses “1” then Network eManager shall remember the last password used and the user will be prohibited from reusing the last password. If the Administrator chooses “0” then the password history will not be enforced. The default value is 2.

Change Password Policy

The password policy menu is located at the top right corner of the Network eManager after login under Application Settings > Account Setup > Change Password Policy (as shown below).



By default the Password Policy is disabled. Select Enabled for Password Policy and the other security criteria will become functional. The Password Complexity is also disabled by default. Enable the Password Complexity field to take advantage of the additional security measures as outlined above. Set the Force Password Change to force Network eManager users to change their password based on the value of the Days After Password Expires.

Change Password Policy	
Password Policy:	<input checked="" type="radio"/> Enable <input type="radio"/> Disable
Password Complexity:	<input type="radio"/> Enable <input checked="" type="radio"/> Disable
Force Password Change:	<input checked="" type="radio"/> Yes <input type="radio"/> No
Days After Password Expires:	<input type="text" value="4"/>
Days To Remind Password Will Expire:	<input type="text" value="2"/>
Minimum Password Length:	<input type="text" value="6"/>
Password History:	<input type="text" value="2"/>
<input type="button" value="Change Policy"/>	

Additional Notes

Network eManager V520B05 encompasses all the features and functionality found in the current release of Network eManager posted on Toshiba FYI and includes additional password policy restriction enhancements. Refer to the Strata CIX Programming Manual (Vol. 1) for all other details regarding Network eManager.

Trademarks

Strata and CIX are registered trademarks of Toshiba Corporation.

Trademarks, registered trademarks, and service marks are the property of their respective owners.

© Copyright 2009

This document is copyrighted by Toshiba America Information Systems, Inc. All Rights reserved.

Product specifications, configurations, prices, system/components/options availability are all subject to change without notice.

- End -