



Product Announcement

Date: March 8, 2010 **Issue number:** 030810DE

Subject: New and Updated Product Announcement

Distribution: Panasonic Dealer Partners

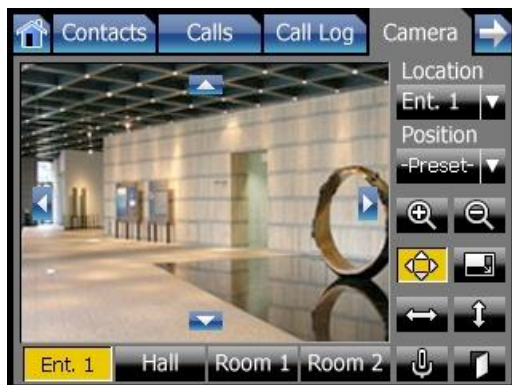
As part of Panasonic's commitment to offering our customers the latest and most advanced products to meet their business communications needs, we are pleased to provide the following product update information for Panasonic Business Telephone System products. We are very excited to continue to grow as the industry grows and to offer you the very best in communications products and services. We hope you find our new product selection simple and easy to manage.

NT400 IP Phone (KX-NT400).

The 5.7" color touch screen phone is really something to talk about! It offers full PBX feature support, built-in telephony applications and is very easy to operate! Available for TDE and NCP only; not supported on physical KX-TDA0470/5470 IP Extension card.

NT400 Terminal (KX-NT400) is available effective March 15, 2009.

- **IP Camera Integration** - Supports camera "pop-up" with doorphone and camera monitoring capability.
- **Built-in Applications** - Full support of HTML-based applications via localized application server (e.g via corporate intranet).
- **CA Support** - CA features integrated with telephone GUI.
- **LDAP Support** - For corporate directory access.
- **TDE/NCP Compatibility** - The NT400 Terminal is compatible with Virtual IP Extensions only. An IP Station license is required.



IP Cell Station (KX-NCP0158)

Both TDE and NCP platforms now support the KC-NCP0158 IP Cell Station. This IP-based DECT Cell Station fully supports existing DECT portable stations and integration to existing non-IP DECT cell stations.

IP Cell Station (KX-NCP0158) is available effective March 15, 2009.

- **8 Channel Support** – 8 call user connections for 10/100 Mbps Ethernet.
- **Ideal Remote Office Solution** – The IP CS eliminates distance issues and provides for full DECT PS support at remote, branch and home office locations.
- **PoE Support** – The NCP0158 is fully PoE capable which means no special power requirements are required.
- **No Additional Licenses Required** – The IP Cell Station is compatible with Virtual IP Extensions only and requires no additional IP Extension licenses.